




The NPi Pathway



Available in the UK from

prospect
Diagnostics

 prospectdiagnostics.co.uk

Your step by step guide to implementing **automated pupillary assessment** for accurate and consistent neurological observation and trending.

NEUR[•]PTICS[®]

prospect
Diagnostics

Introduction and purpose

Automated pupillometry and the Neurological Pupil index (NPi) are increasingly being adopted in hospitals across the UK and worldwide as a standard of care for supporting the management of patients with a variety of critical conditions.

This guide is designed to support the smooth and successful integration of the NPi-300 Pupillometer and NPi into your clinical practice.

By following the guide, we can capture all key information step by step, helping ensure the process is efficient, well-organised, and time-saving.

From the initial discussions, through to the routine use of the device, the project is structured into four clear and manageable phases:

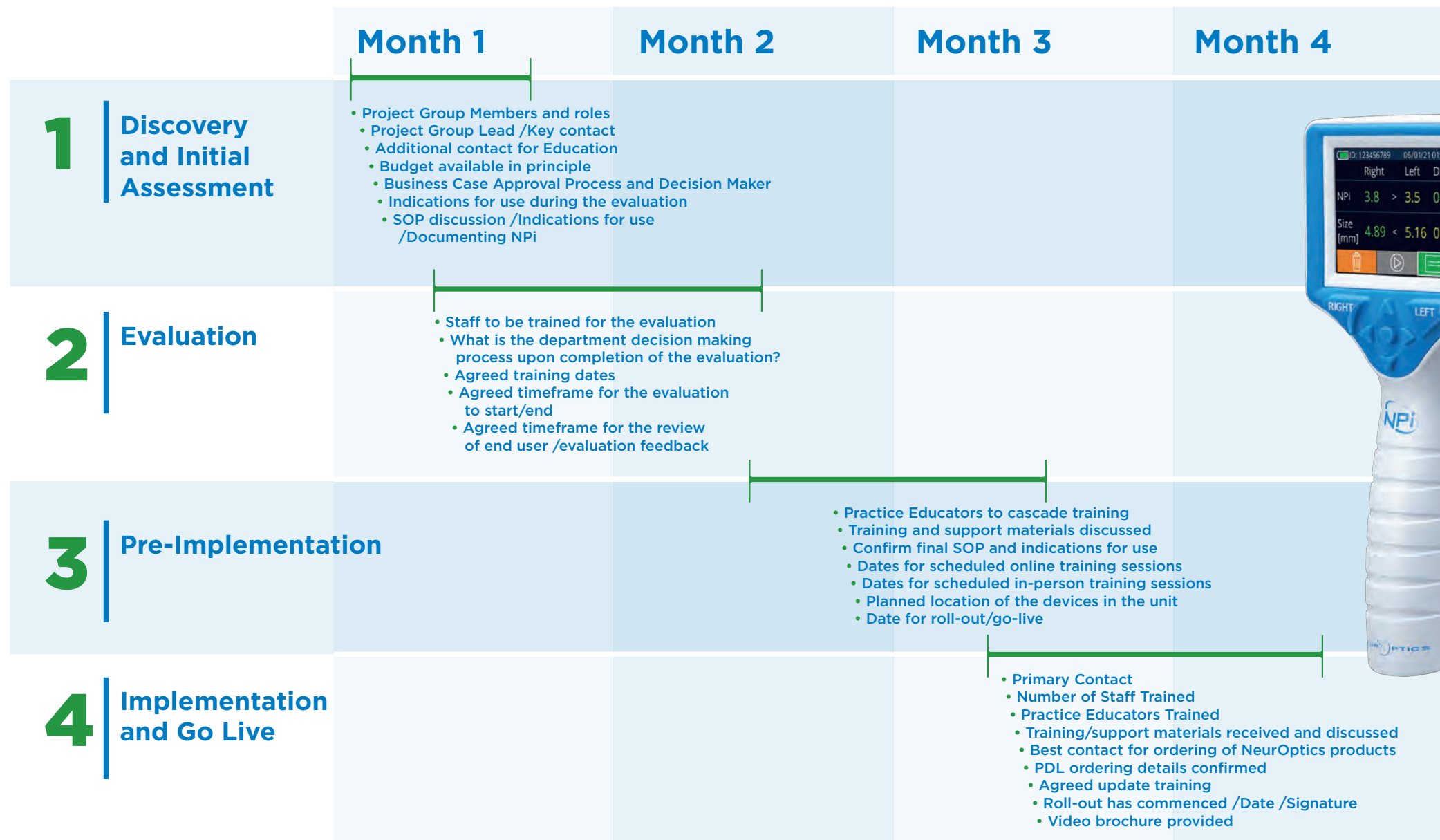
- **Discovery and Initial Assessment**
- **Evaluation**
- **Pre-Implementation**
- **Implementation and Go-Live**

Developing specific protocols and education are essential to integrating and embedding the NPi into clinical practice. Each phase is an opportunity to meet with the key clinicians involved in the project (typically via online meetings) and includes a checklist to help guide discussions and gather the information needed before progressing to the next stage.

Our aim is to work collaboratively and to make the process of exploring and adopting the NPi as easy as possible. We'll share a range of educational resources and support materials throughout the project to ensure your team is fully equipped every step of the way.



Typical project timeline



Discovery and Initial Assessment

1

The Discovery and Initial Assessment phase establishes the foundation for our Implementation Project. Key roles, including the Project Group Lead and education contacts, facilitate communication and collaboration. A preliminary budget is identified, and understanding the business case approval process is essential for aligning with the department's goals. This stage also involves discussions on indications for use and Standard Operating Procedures (SOP) for the final rollout, ensuring all stakeholders are informed and engaged.



Checklist

- ☐ Project Group Members and roles
- ☐ Project Group Lead/Key contact
- ☐ Additional contact for Education
- ☐ Budget available in principle
- ☐ Business Case Approval Process and Decision Maker
- ☐ Indications for use during the evaluation
- ☐ SOP discussion /Indications for use /Documenting NPi

Access the NeuroOptics NPi®-300 Pupillometer Full System Setup and Pupil Exam video here:



Evaluation

2

In the Evaluation stage, we focus on assessing the effectiveness of the project. Staff training for the evaluation process is essential, along with clarity on the department's decision-making process following the evaluation. Agreed-upon training dates and a defined timeline for the evaluation's start and end will help maintain momentum. Additionally, a structured timeline for reviewing end-user feedback will ensure insights are gathered to inform future decisions.

Checklist

- ☐ Staff to be trained for the evaluation
- ☐ What is the department decision making process upon completion of the evaluation?
- ☐ Agreed training dates
- ☐ Agreed timeframe for the evaluation to start /end
- ☐ Agreed timeframe for the review of end user /evaluation feedback

Pre-Implementation

3

During the Pre-Implementation phase, we work closely with clinical teams to help ensure a smooth introduction. We'll confirm local Standard Operating Procedures (SOPs) and clarify agreed indications for use. In-person and online training will be delivered to meet your needs, with requirements discussed and agreed as part of the project. Practice Educators will share training with colleagues, with guidance and materials provided throughout. Finally, we'll agree on a go-live date that feels appropriate for the team, marking the start of confident, routine use in the clinical setting.

Checklist

- ☐ Practice Educators to cascade training
- ☐ Training and support materials discussed
- ☐ Confirm final SOP and indications for use
- ☐ Dates for scheduled online training sessions
- ☐ Dates for scheduled in-person training sessions
- ☐ Planned location of the devices in the unit
- ☐ Date for roll-out/go-live: / /



Implementation and Go Live

4

Practice Educators will receive appropriate training, with supportive materials available to ensure everyone feels confident and well prepared. We'll also take time to confirm local ordering processes for NeuroOptics products, including the relevant Prospect Diagnostics ordering details. If any refresher or update training is needed, this will be arranged at a convenient time. Together, we'll agree on a suitable date to begin using the device in practice, and confirm any necessary documentation to support a smooth and effective introduction into the clinical setting.

Checklist

- ☐ Primary Contact:
- ☐ Number of Staff Trained:
- ☐ Practice Educators Trained:
- ☐ Training/support materials received and discussed
- ☐ Best contact for ordering of
NeuroOptics products:
- ☐ PDL ordering details confirmed
- ☐ Agreed update training: / /
- ☐ Roll-out has commenced
Date: / /
- Signature:
- ☐ Video brochure provided

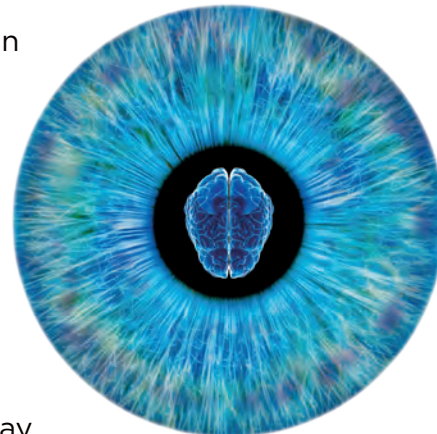
NeurOptics



The NeurOptics Pupillometer is transforming neurological assessment with objective, automated pupil measurements, eliminating subjectivity in critical evaluations.

At the heart of this innovation is the Neurological Pupil index™ (NPi®)—a scientifically validated, quantitative measurement that provides a consistent, reliable assessment of pupil reactivity. Designed for use in intensive care, emergency, and neurology settings, the NeurOptics Pupillometer seamlessly integrates into clinical workflows, enabling healthcare professionals to make faster, more informed decisions when evaluating brain function.

Backed by over two decades of expertise in pupillometry, NeurOptics is the trusted leader in automated neurological assessment. Its infrared technology and intuitive interface allow for rapid, repeatable measurements, ensuring consistency across patient evaluations. The NPi® removes variability in pupil assessment, offering a standardised, evidence-based approach to monitoring conditions such as traumatic brain injury, stroke, and neurological deterioration. Today, NeurOptics devices are used in more than 40 countries worldwide, helping healthcare providers improve patient outcomes with precision and reliability in neurological care.



Prospect Diagnostics



Prospect Diagnostics is a leading distributor of innovative medical technologies, committed to improving clinical outcomes through cutting-edge solutions.

With a focus on quality, reliability, and service, we partner with world-class manufacturers to bring the latest advancements in diagnostic and patient monitoring equipment to healthcare providers across the UK. Our carefully selected portfolio includes industry-leading products that enhance diagnostic accuracy, streamline workflows, and support better patient care. Whether in critical care or specialist diagnostics, we provide trusted solutions that empower healthcare professionals to deliver the highest standards of treatment.

With over 30 years of expertise in the medical distribution sector, Prospect Diagnostics is dedicated to delivering exceptional customer support, ensuring healthcare providers have access to the best tools for patient care. Our team works closely with hospitals, clinics, and healthcare professionals to provide tailored solutions that meet their specific needs.

To place your **NeurOptics** order, please contact us by emailing orders@prospectdiagnostics.co.uk or call us on **01246 292 955**

- **NPi-300 Pupillometer** - product code: **PNPi-300**
- **SmartGuards (box of 24)** - product code: **PSG-200**





Distributed by:

Prospect Diagnostics Limited
Viking Court, 31 Princess Road
Dronfield, Derbyshire S18 2LX

Tel: 01246 292 955

General enquiries:
customercare@prospectdiagnostics.co.uk

Orders:
orders@prospectdiagnostics.co.uk

Product order codes:
NPi-300 Pupillometer - **PNPi-300**
SmartGuards (box of 24) - **PSG-200**